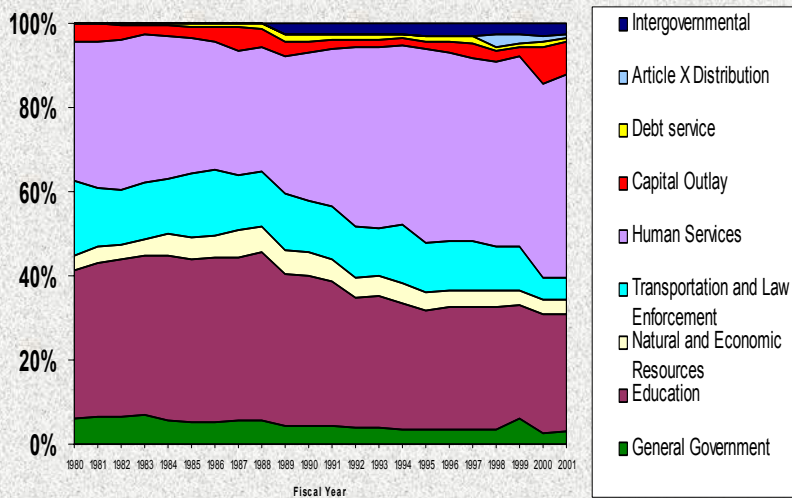


# Missouri's State and Local Expenditures

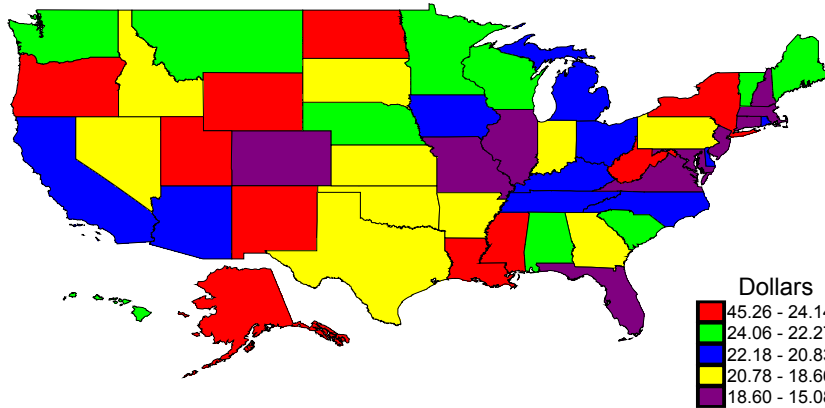
Judith I. Stallmann, Professor  
Agricultural Economics and Rural Sociology  
University of Missouri-Columbia  
stallmannj@missouri.edu

Suggested Citation:  
Stallmann, J. I. (October 24, 2003). *Missouri's state and local expenditures*. Presented at the Missouri Community Development Society, Professional Development Series. Retrieved [Month, Day, Year], from University of Missouri System, Missouri Legislative Academy Web site:  
<http://www.truman.missouri.edu/ipp/mla/publications/publications.htm>

## State Percentage of Net Expenditures



## 2000 Direct Expenditures per \$100 of income



© Judith I. Stallmann

## State rank on 2000 taxes, expenditures, per capita income

State	Tax Rank	Expenditure Rank	Per capita income rank
Arkansas	29	31	47
Kansas	26	34	30
Illinois	33	41	9
Indiana	36	37	31
Iowa	23	21	33
<b>Missouri</b>	<b>43</b>	<b>45</b>	<b>28</b>
Nebraska	22	16	27
Oklahoma	35	36	41
Tennessee	49	24	34

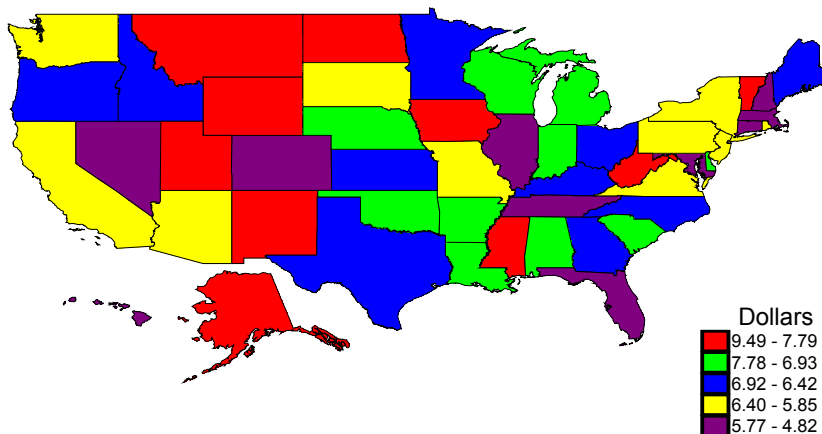
© Judith I. Stallmann

## Missouri 2000 expenditures per \$100 of income

All state & local expenditures	\$18.14	ranks 45
Education	\$ 6.06	ranks 37
Social services	\$ 4.09	ranks 33
Transportation	\$ 1.61	ranks 26
Public safety	\$ 1.34	ranks 37
General government	\$ 0.75	ranks 46

© Judith I. Stallmann

## 2000 Education Expenditures per \$100 of income



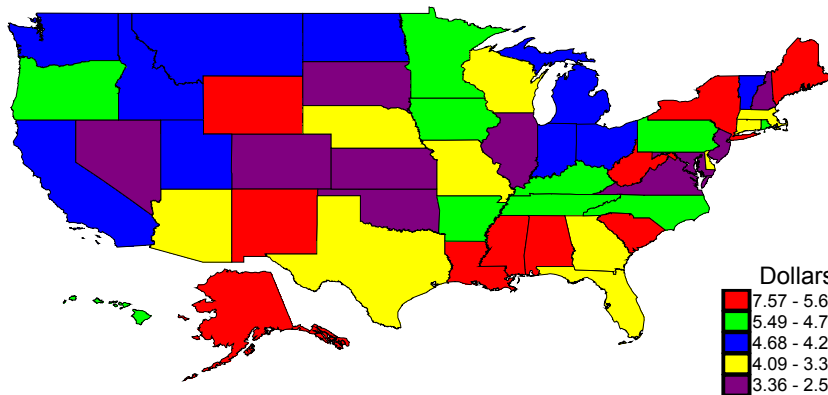
© Judith I. Stallmann

## State rank on state and local education expenditures per \$100 of income

Arkansas	15
Kansas	25
Illinois	<b>41</b>
Indiana	18
Iowa	10
<b>Missouri</b>	<b>37</b>
Nebraska	20
Oklahoma	16
Tennessee	<b>43</b>

© Judith I. Stallmann

## 2000 Social Services Expenditures per \$100 of income



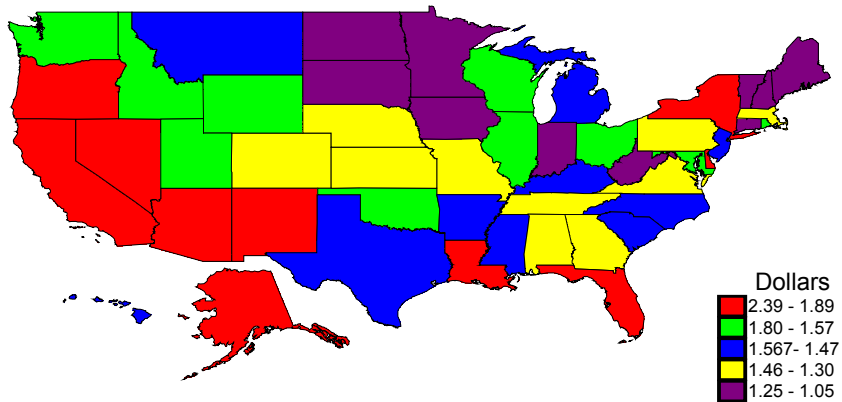
© Judith I. Stallmann

## State rank on state and local social services expenditures per \$100 of income

Arkansas	16
Kansas	<b>45</b>
Illinois	<b>42</b>
Indiana	27
Iowa	14
<b>Missouri</b>	<b>33</b>
Nebraska	32
Oklahoma	<b>49</b>
Tennessee	15

© Judith I. Stallmann

## 2000 Public Safety Expenditures per \$100 of income



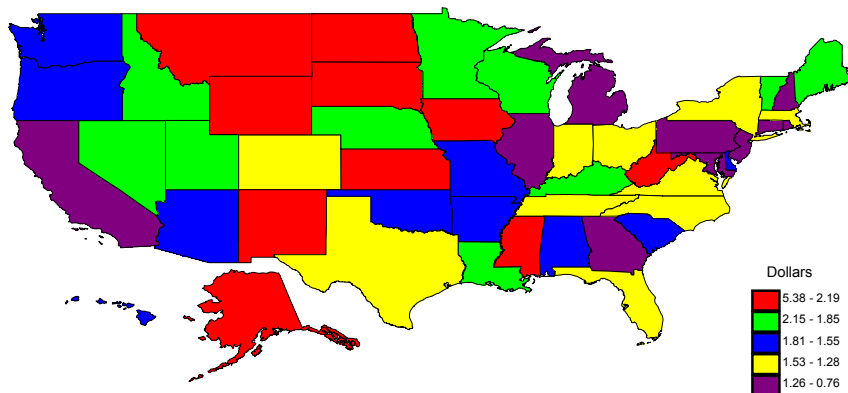
© Judith I. Stallmann

## State rank on state and local public safety expenditures per \$100 of income

Arkansas	30
Kansas	35
Illinois	19
Indiana	<b>41</b>
Iowa	<b>45</b>
<b>Missouri</b>	<b>37</b>
Nebraska	<b>40</b>
Oklahoma	17
Tennessee	36

© Judith I. Stallmann

## 2000 Transportation Expenditures per \$100 of income



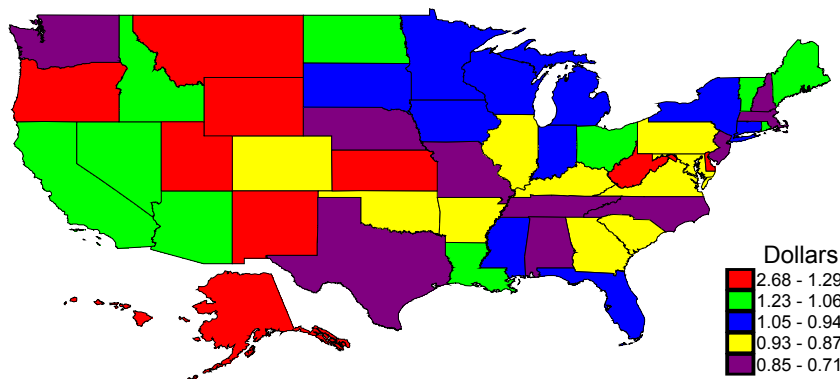
© Judith I. Stallmann

## State rank on state and local transportation expenditures per \$100 of income

Arkansas	30
Kansas	8
Illinois	43
Indiana	40
Iowa	7
<b>Missouri</b>	<b>26</b>
Nebraska	14
Oklahoma	21
Tennessee	34

© Judith I. Stallmann

## 2000 General Government expenditures per \$100 of income



© Judith I. Stallmann

## State rank on state and local general government expenditures per \$100 of income

Arkansas	31
Kansas	10
Illinois	33
Indiana	28
Iowa	29
<b>Missouri</b>	<b>46</b>
Nebraska	<b>47</b>
Oklahoma	35
Tennessee	45